

## HD-550 VIDEO PROCESSOR

Station	Separated
Video output	SDI, DVI, VGA, CVBS, S-video
Resolution	1080p
Chromo	SFI/VIST
Digital Zoom	1.4x, 1.6x, 1.8x
Patent Data	≥ 10,000 records
I/HS	Peak/Avg/Auto
Color adjustment	Red, Blue, Chroma, ±15 levels
Air feeding	4 levels (Off/LM/H)
AGC	Yes
Data Management	500G Built-in, 5 USB, DICOM
White Balance	Auto-saved
Image enhancement	Structure enhancement, Edge enhancement
Contrast/denoise	LM/H, auto-denoise
Dimension (mm)	480x370x125

## VS-50 SERIES LIGHT SOURCE

Main Lamp	W-LED, 70W, violet LED, 50W
White light mode	High color rendering index and high luminous flux
VIST/SFI	High brightness and specific spectra in the 2 special light modes
Brightness	Auto/Manual, 1-19 levels
Transillumination mode	6-8 seconds
Service time	10000 hours (Continuous use)
Hot plugging	Yes
Dimension (mm)	473x370x154

## 550 SERIES SCOPES

	EG-550	EG-550L	EC-550	EC-550T	EC-550L	EC-550L/T
Field of view	140°	140°	140°	140°	140°	140°
Depth of view	3-100mm	3-100mm	3-100mm	3-100mm	3-100mm	3-100mm
Distal End Dia.	9.3mm	9.8mm	12mm	12.9mm	12.9mm	12.9mm
Insertion Dia.	9.3mm	9.8mm	12.5mm	12.5mm	12.9mm	12.9mm
Instrument Dia.	2.8mm	3.2mm	3.8mm	3.8mm	4.2mm	4.2mm
Angulation	U/210°, D/90°, L/R/100°		U/D/180°, L/R/160°			
Working length	1050mm	1050mm	1350mm	1700mm	1350mm	1700mm
Water Jet	Yes	Yes	Yes	Yes	Yes	Yes
OneTouch	Yes	Yes	Yes	Yes	Yes	Yes
Optical Fiber Trans	Yes	Yes	Yes	Yes	Yes	Yes



SonoScape Medical Corp.  
2F, 1<sup>st</sup> Building, Shenzhen Software Park Phase II, Keji Middle  
2<sup>nd</sup> Road, Shenzhen, China  
Tel: +86-755-26722890 Fax: +86-755-26722850  
Email: market@sonoscape.net www.sonoscape.com

ISO 13485 CE 0197

# A BRIGHTER WAY TO IMAGE CLARITY

HD-550, High Definition Video Endoscopy System  
with multi-LED Light Source and SFI/VIST Technology



E-HD55020190923

The one-stop, cost effective, High Definition Video Endoscopy System just got better. SonoScape's HD-550 has evolved in many ways, excelling in a variety of routine and complex procedures.



### One step connection, hot plugging

Zero cable involved, switching scopes has never been this convenient. Plug and play without interrupting the processor, the system guarantees a seamless procedure at any time.



### Improved scope handle design

Even more comfortable to hold, the 550 series scope handle adopts an ergonomic design and a more intuitive layout, helps to reduce the fatigue in longer interventions.



### Outstanding manoeuvrability

Short bending radius and gradual stiffness allows to intubate, reach and observe efficiently. The large instrument channel facilitates the therapeutic procedures.



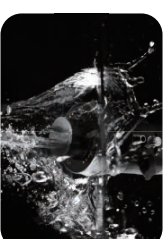
### Water jet

All the scopes are equipped with water jet function, handily aligned with the direction of the instrument channel. It washes off any mucus or blood and assures a clear view at all times.



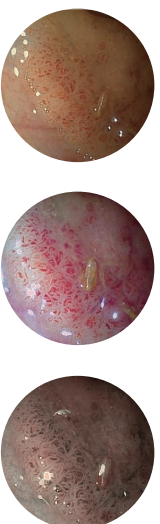
### Real waterproof

The 550 series scopes can be submerged under water or solution without a waterproof cap. They can now be cleaned and disinfected with ease, at a minimal risk of water damage by mismanipulation.



**More versatility with the new multi-mode SFI/VIST<sup>1</sup>**  
The new chromoendoscopy SFI/VIST<sup>1</sup> is interchangeable at the touch of a button, between White-light, SFI<sup>2</sup> and VIST<sup>3</sup>, instantly suiting your needs in detection, demarcation or characterization.

White-light Mode	SFI	VIST
Default	Vascular enhancement	Mucosal and vascular enhancement



*Courtesy of Prof. Helmut Neumann, Mainz, Germany.*

### Maximized optical effect, minimal light loss

HD-550 employs a multi-LED light source with a lifespan of 10,000 hours. Its Variable Spectrum Control offers highly intensive, purified and all-round light options. You will obtain a noticeable brighter, high quality image, and impressive staining effects.

### A clear vision with Full HD output

Armed with a 2-megapixel CMOS sensor, HD-550 supports 1080p resolution.

### Brilliant workflow

HD-550 inherits the built-in workstation with 500GB of hard disk. It allows you to access patient data, to capture and record images and videos, to create and edit reports in one spot without the need of any extra software.



<sup>1</sup> Spectral Focused Imaging / Versatile Intelligent Staining Technology

<sup>2</sup> Previously known as VIST 1 mode, VIS positioned at 21

<sup>3</sup> Previously known as VIST 2 mode, VIS positioned at 31